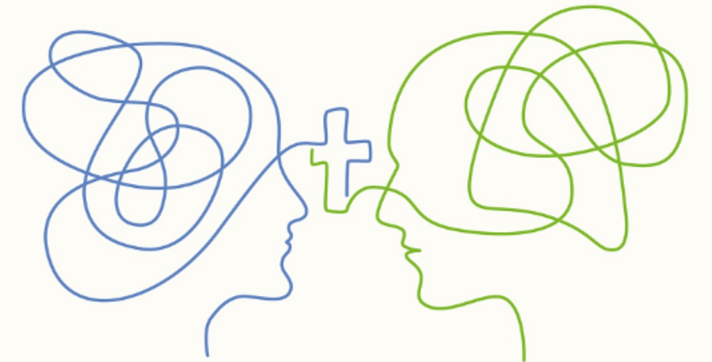


Stream 3

**Professional
Counsellors**

Session 2: Thinking about Structure & Boundaries



Biblical Underpinnings:

1 Corinthians 14:40 “But everything should be done in a fitting and orderly way.” – Regarding corporate worship.

Colossians 3:23-24 “Whatever you do, work at it with all your heart, as working for the Lord, not for human masters, since you know that you will receive an inheritance from the Lord as a reward.”

Galatians 5:16, 22-23 “So I say walk by the Spirit...But the fruit of the Spirit is love, joy, peace, forbearance, kindness, goodness, faithfulness, self-control and love.”

Micah 6:8 “He has shown you, O mortal, what is good. And what does the Lord require of you? To act justly and to love mercy and to walk humbly with your God.”

Humility & Dependence:

We believe our work is foundationally and primarily dependent upon Christ and his Spirit's work in the Counselee's life.



Humility & Dependence:

- Prayerfulness within & outside of sessions
- Recognition of and commitment to work within limitations
- Pointing supremely to Christ
- Desire to grow
- Regular and honest supervision



Gentleness & Respectfulness:

We view each person we work with fundamentally as created by God and bearing his image. We also understand that each person has a lifetime of history that we will never fully know or share. This causes us to move gently into the person's life, showing respect for them as an individual, known fully only by their Maker.



Gentleness & Respectfulness:

- Committed to making much of Christ
- Valuing differences
- Respecting autonomy
- Respecting privacy
- Culturally sensitive
- Centrality of consent



Faithfulness & Honesty:

We are called to live lives worthy of Christ Jesus our Lord, who lives and speaks truthfully and faithfully. We seek to be transparent, accountable, self-reflective and live lives that embody the gospel we proclaim.



Faithfulness & Honesty:

- Clear, understandable & transparent communication
- Clear limits of confidentiality
- Do not seek gain
- Quick to admit mistakes & minimise harm
- Acknowledge dual relationships & limitations



Righteousness & Justice:

The gospel has real implications and brings change in our lives as individuals, families, organisations and in wider systems. Where we are able, we act upon the call to bring the light of Christ to illuminate brokenness and harm. We seek to protect and advocate for those who are under our care.



Righteousness & Justice:

- Working within safeguarding policies and practice
- Cooperation with church leaders to promote safe shepherding
- Develop robust theology of oppression and how to safeguard against it



A note on Power:

Power dynamics are ever-present in helper/help seeker relationships.

Context changes the dynamic but does not eradicate it.

We need honesty, wisdom and discernment to understand how the power dynamic drives the parameters of the relationship.

